

HOW TO INSTALL DHL CONNECT 3.3 ?



DHLCONNECT

EXCELLENCE. SIMPLY DELIVERED.



1. How to Install DHL Connect 3.3 for the First Time:

- § Go to your country's DHL website or select yours from the drop-down menu on www.dhl.co.ae
- § Click “Express” >> “Resource Center” >> “Advanced shipping Solution”.
- § Click on the link – Download DHL Connect v.3.3
- § Click the “save” button to download **DHL Connect 3.3** to the desktop. After downloading is completed, **DHL Connect 3.3** will be automatically installed on your PC. Click “RUN” to initiate installation.
- § Choose your language, and you will be directed to the Welcome screen.
- § Choose your country, and click on “NEXT” as many times as required until the installation process is over.

2. How to Upgrade Older Versions of DHL Connect to 3.3:

If you are already a DHL Connect user and want to upgrade your old version to the newer one, you have two options:

Either:

- § Click on the **DHL Connect** icon on your desktop.
- § On the “Preparing Your Shipment” screen, you will be prompted to upgrade your current version.
- § Choose the “**Upgrade**” option.



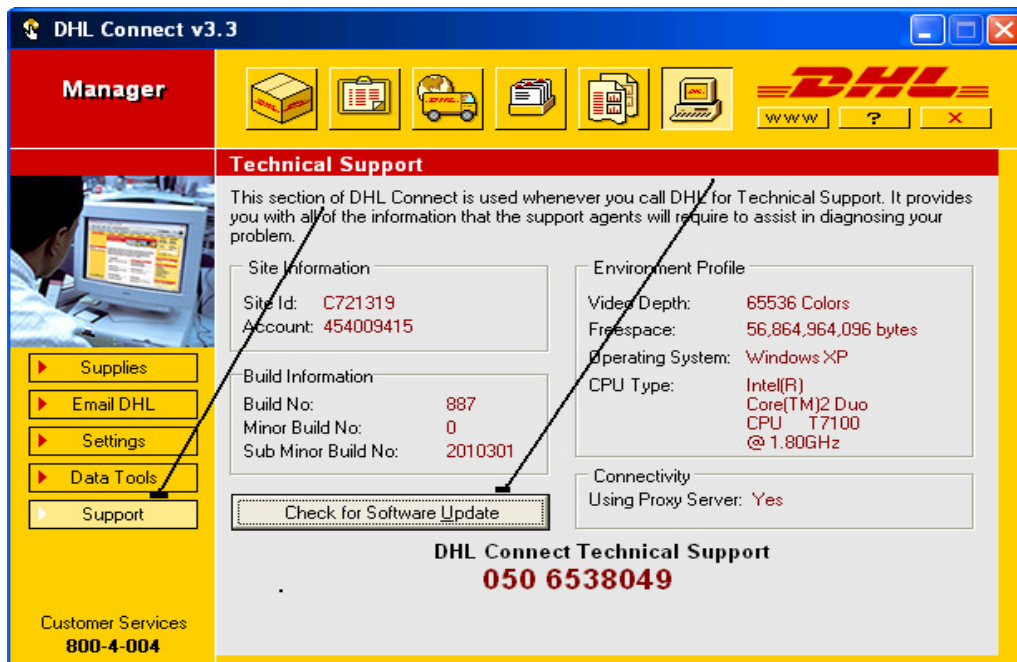
If you choose to download “**Later**” the system will remind you the next time you prepare your shipment that you need to upgrade your current version.

Or:

- § Access the old version of DHL Connect that you already have installed on your PC.
- § Select “Settings and Options” from the upper menu.



- § Click on “Support” and then on “Check for Software Update” option.



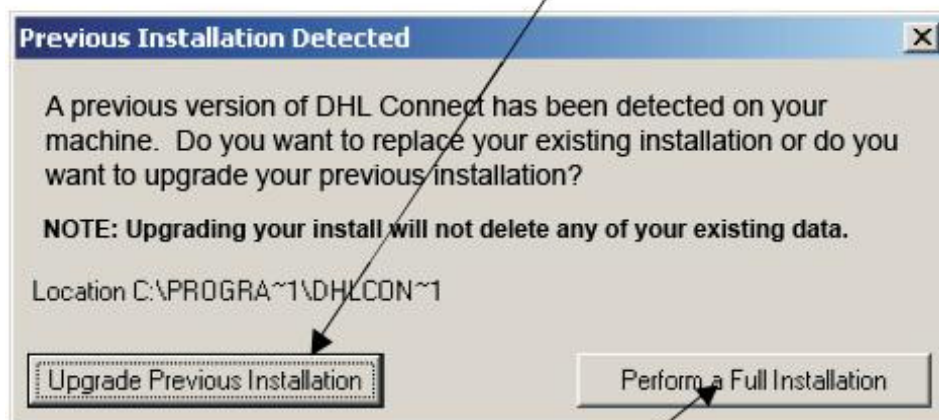
§ Choose the “Upgrade” option.



If you choose to download “Later” the system will remind you the next time you prepare your shipment that you need to upgrade your current version.

IMPORTANT: By following the above process, your database will be retained in the new version (Shipper/Consignee and Shipment History).

Note: If your already-installed older version is either version 3.1 or 3.2, you will need to do the upgrade manually. Click the “Upgrade Previous Installation” button to keep your database as is.



If you select “Perform a Full Installation,” you will lose your current database.

Need more details about DHL Connect ?

Please contact your local DHL Customer Service or send an email to ecom.ae@dhl.com

Marketing-eCom
Asia Pacific, Eastern Europe, Middle-East & Africa

DHL Express
Country Office
Dubai Airport Terminal 2
Dubai , U.A.E

www.dhl.co.ae

